

Maps for OziExplorerCE

This will be a basic run-down on how to utilise the free Government maps with OziExplorerCE.

The program we will first use is OziMapGrabber, followed by Img2Ozf to convert the maps into a more efficient format for OziExplorerCE. The download links for these programs are available in the References section at the end of this document.

Here we have the opening screen of OziMapGrabber.

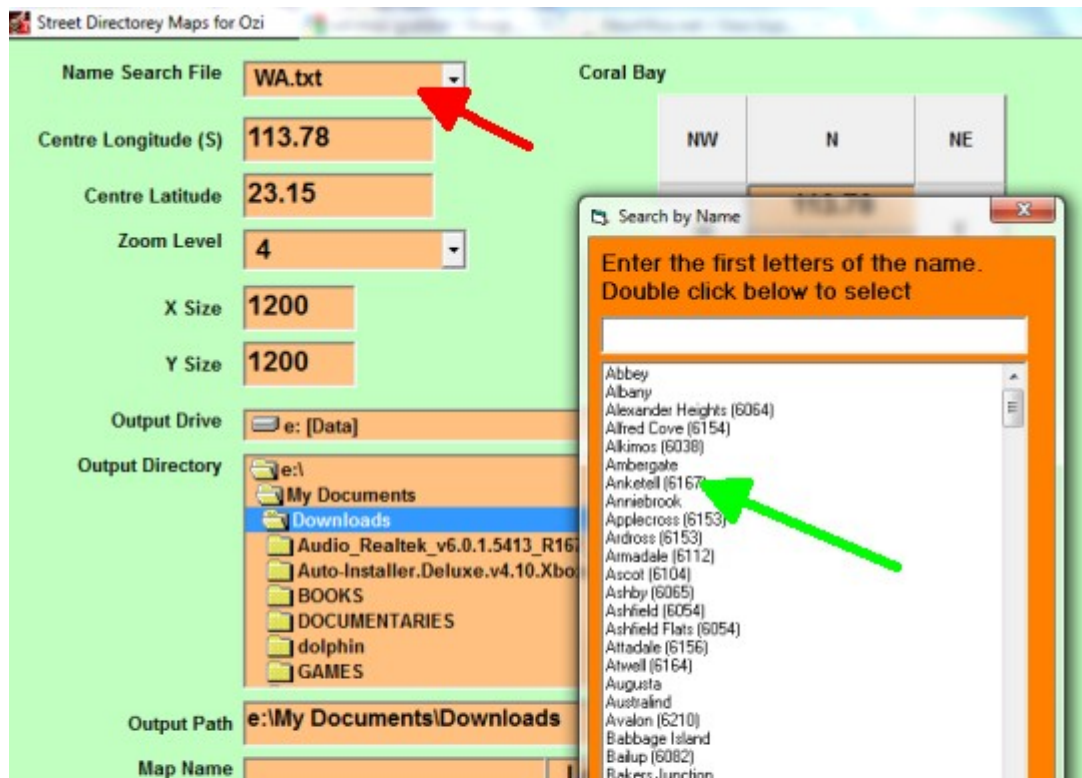
The screenshot shows the 'Street Directory Maps for Ozi' application window. The interface is light green with orange input fields. The title bar says 'Street Directory Maps for Ozi'. The main area is titled 'Coral Bay'. On the left, there are input fields for 'Name Search File' (a dropdown with 'Select File'), 'Centre Longitude (S)' (113.78), 'Centre Latitude' (23.15), 'Zoom Level' (4), 'X Size' (1200), and 'Y Size' (1200). On the right, there is a 3x3 grid of directional buttons: NW, N, NE, W, E, SW, S, SE. The 'N' and 'E' buttons are highlighted with the coordinates 113.78 and 23.15 respectively. Below the grid, there is a 'Preview' button. At the bottom, there is a 'Use full path in map file.' checkbox (unchecked) and a 'Deselect to have image name only.' checkbox (checked). The 'Output Drive' is set to 'c: [System]'. The 'Output Directory' is a tree view showing 'c:\', 'OziExplorer', 'Program Files', 'Users', and 'Windows'. The 'Output Path' is 'c:\'. The 'Map Name' field is empty, and a note says 'Lat + Long will be added to map name'. There is an 'Auto Grab' button and a large 'Get Image - Save and create .map file' button. An 'Exit' button is in the bottom right corner.

Direction	Longitude	Latitude
NW		
N	113.78	
NE		
W		23.15
E		23.15
SW		
S		
SE		

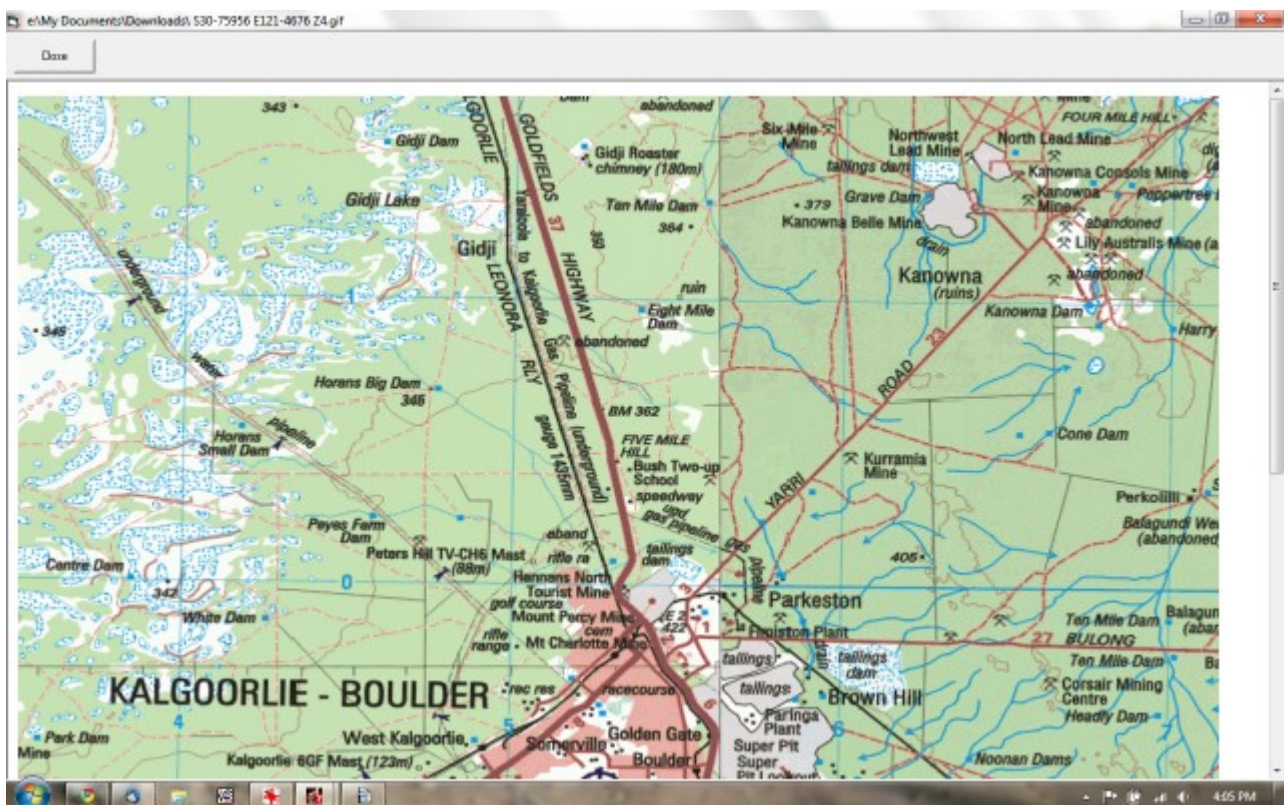
Maps for OziExplorerCE

Select the State you need maps for (red arrow)

Start typing or click on the town name near where you require maps (green arrow).



This will locate the map centred on the town you chose.
Clicking the 'Preview' button will show the particular map.



Maps for OziExplorerCE

Clicking one of the Direction Buttons around the latitude/longitude (red arrow) will move 1 map (tile) in the direction that you choose. The 'Preview' button will show you the map again.

Name Search File: WA.txt

Kalgoorlie-Boulder

Centre Longitude (S): 121.4676

Centre Latitude: 30.75956

Zoom Level: 4

X Size: 1200

Y Size: 1200

Output Drive: e: [Data]

Output Directory: e:\My Documents\Downloads

Output Path: e:\My Documents\Downloads

Preview

Use full path in map file. Deselect to have image name only.

The X and Y size is the pixel size of the map you wish to download.
De-select the Use full path box (green arrow).

Use the 'Auto Grab' button to get a range of Maps that you require. Just remember that the more tiles you choose and the larger the X and Y, the longer it will take to download.

Output Drive: e: [Data]

Output Directory: e:\My Documents\Downloads

Output Path: e:\My Documents\Downloads

Map Name: kaloz

Lat + Long will be added to map name

Auto Grab

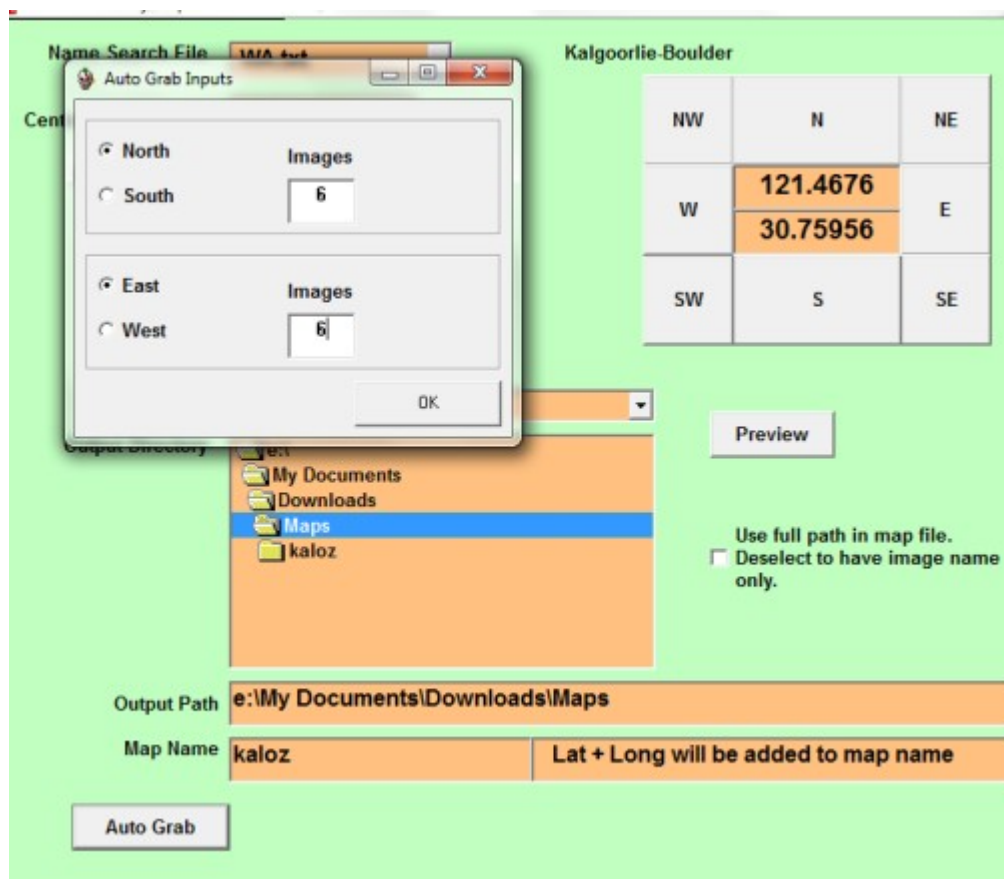
INSTRUCTIONS

This function will automatically grab the number of maps you require starting from the lat/long and going x images north/south and y images east/west. You will need to enter the number of images required and the direction required. CAUTION - if you get carried away, the program may request a map that is not available on the server which may cause unexpected results

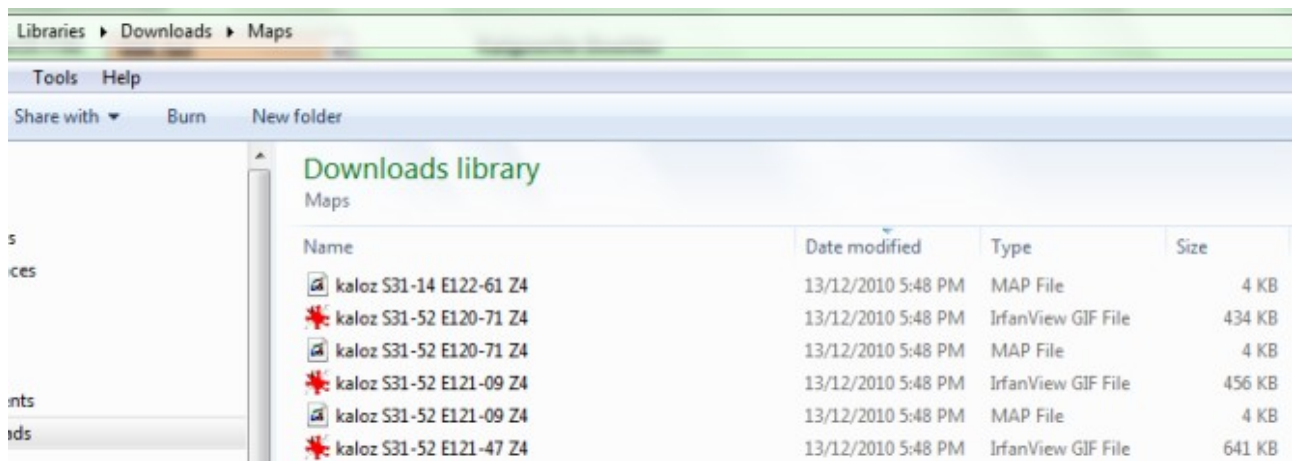
OK Cancel

Set your map location to the most South West map that you wish to grab and type in a Map Name, eg. kaloz for mine. So, to get a grid of 36 with Kalgoorlie in the middle, I would click 'SW' three times, then click on 'Auto Grab'. The above screen pops up, click on 'Okay'. Then, change the Images to 6 North and 6 East to give you the grid of 36 maps.

Maps for OziExplorerCE



Once it has finished, check the directory where you saved the maps.
In my example, you should have 72 files, a small MAP file and a larger GIF image.

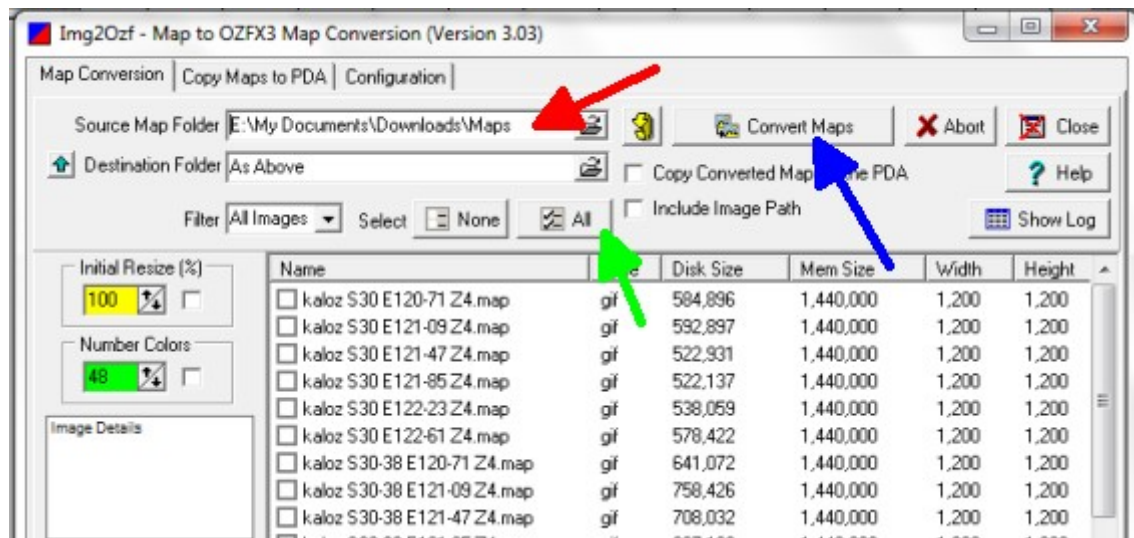


Next you'll want to convert these files for use with OziExplorer by using 'Img2Ozf'.

Once 'Img2Ozf' starts, change the 'Source Map Folder' (red arrow) to where you saved your maps from OziMapGrabber. If the maps don't automatically show up, click on the Refresh icon to the right of the red arrow. By default the program will save the converted maps to the same directory, but it may make it easier if you change this to a different directory that you have created.

To convert all of the maps you downloaded previously with OziMapGrabber, click on the All button (green arrow) to select them. Next, click on the 'Convert Maps' button (blue arrow) to make the magic happen.

Maps for OziExplorerCE



Once 'Completed' is displayed at the bottom left of screen, you will need to copy these newly created maps to Maps folder on your MicroSD card. When you run OziExplorerCE you will direct the program to look in your Maps folder for these maps. The files you are copying over are shown highlighted in the next screenshot. The maps end with _ozf and the special OziExplorer files end with .ozfx3.

Name	Date modified	Type	Size
kal S30-38 E121-47 Z4	14/12/2010 5:50 PM	IrfanView GIF File	692 KB
kal S30-38 E121-85 Z4	14/12/2010 5:50 PM	IrfanView GIF File	623 KB
kal S30-76 E121-85 Z4	14/12/2010 5:50 PM	IrfanView GIF File	730 KB
kal S30-75956 E121-4676 Z4	14/12/2010 5:50 PM	IrfanView GIF File	417 KB
kal S30-38 E121-47 Z4	14/12/2010 5:50 PM	MAP File	4 KB
kal S30-38 E121-47 Z4_ozf	14/12/2010 5:52 PM	MAP File	4 KB
kal S30-38 E121-85 Z4	14/12/2010 5:50 PM	MAP File	4 KB
kal S30-38 E121-85 Z4_ozf	14/12/2010 5:52 PM	MAP File	4 KB
kal S30-76 E121-85 Z4	14/12/2010 5:50 PM	MAP File	4 KB
kal S30-76 E121-85 Z4_ozf	14/12/2010 5:52 PM	MAP File	4 KB
kal S30-75956 E121-4676 Z4	14/12/2010 5:50 PM	MAP File	4 KB
kal S30-75956 E121-4676 Z4_ozf	14/12/2010 5:52 PM	MAP File	4 KB
kal S30-38 E121-47 Z4.ozfx3	14/12/2010 5:52 PM	OZFX3 File	679 KB
kal S30-38 E121-85 Z4.ozfx3	14/12/2010 5:52 PM	OZFX3 File	627 KB
kal S30-76 E121-85 Z4.ozfx3	14/12/2010 5:52 PM	OZFX3 File	722 KB
kal S30-75956 E121-4676 Z4.ozfx3	14/12/2010 5:52 PM	OZFX3 File	408 KB

References

Using Maps with OziExplorerCE - http://www.ozexplorer3.com/ozice/ozice_maps.html

Info and Download for Img2Ozf - <http://www.ozexplorer3.com/img2ozf/img2ozf.html>

Info and Download for OziMapGrabber - <http://www.gpsaustralia.net/forums/showthread.php?t=1272>

Good Luck.